



FABCO Machine Mobile


bcfabco@hughes.net
(870) 240-7379

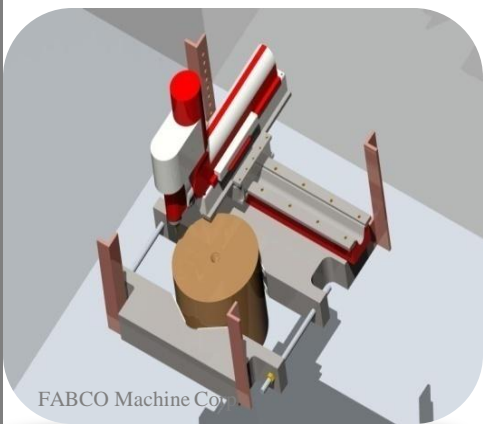
Consistency:
Our engineers, machinist, fabricators, maintenance, and automation team members are long term dedicated employees that are consistent, reliable, and trustworthy. You will not see different personnel every time you call us.

FABCO has served the steel mill industry for over 22 years. We have built close relationships with our customers with a commitment to offer high value services hard to find elsewhere. Our commitment to the customers we service has driven us to invest in equipment, infrastructure, and personnel that allow us to offer unmatched capacity and capability in strategic areas. We plan to have the capability to provide limited on-site work. We will have two very experienced dedicated teams to support on site machining and fabrication. Initially we will not offer emergency service. We continue to develop the resources, processes, and skills needed to offer a unique service to the industry. With our infrastructure in place, we plan to offer unique services that can be implemented quickly. One such offering we are planning is our ability to deploy portable shops directly to some job sites, truly bring our shop to you.



We Grow With You:
We have never been satisfied with the status quos, through our 22 years in the industry. We have focused on our customers needs to grow our business in a way that brings the most value to them. Mobile Services is being born out of this. It is our commitment to compete with existing services, and also go beyond other services to offer unique capabilities that are generally only available through distant providers or not at all.

 **CLIMAX** BB5000 Line Boring Machine



Tools That Count:
FABCO's Engineering Department uses PRO ENGINEER to model individual parts to complete machines for customers as well as for our own use to solve unique and difficult applications. To the left is a concept rendering used to develop and communicate a process to one of our customers. Top right is a picture of the actual machine fabricated directly from the 3D model.

Let FABCO partner with you and grow into a valued and trusted team member.



FABCO Machine Mobile

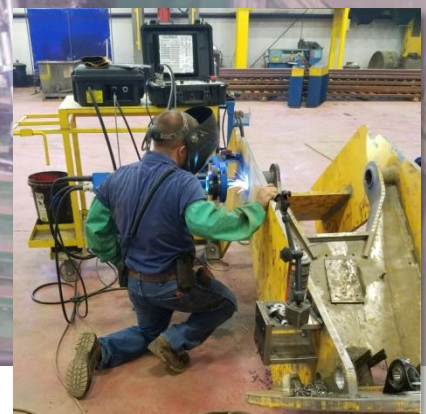
bcfabco@hughes.net
(870) 240-7379

Mission:

The Mission of FABCO Machine Corporation is to continue full-filling our customers needs with trouble-free, superior quality machined and fabricated projects and services

Our customers appreciate our ability to provide products that are unique and difficult to find elsewhere.

FABCO's Engineering department is ready to help you with design and engineering of your parts, specialty machines and industrial projects. Using multiple tools including our FARO Tracker and Edge Arm, Pro Engineer Machinist, CadKey Key Creator Machinist and state of the art OMAX CAD/CAM software we can help with reverse engineering and provide 3D models, design drawings, and CNC programs of obsolete and hard to source parts, equipment and specialty machines.



How do we do that:

We full-fill our mission on-time, by using progressive technology, and always improving our processes.

We live by our core values of Excellence and Innovation in all we do, Honesty, Integrity, and Teamwork are shared across the organization.

Right the first time,
On time, every time.

Capabilities That Count:

FABCO's Maintenance department has a wide range of capabilities from



industrial repair and maintenance to mechanical and electrical rebuilding including automation projects. With our FARO Tracker and Total Station we can help with equipment/line setting and alignment.

Let FABCO partner with you and grow into a valued and trusted team member.